



NEW MOBILITY CULTURE, GOOD MOBILITY PARTNER

 **DAYOU A-TECH**

DAYOU A-TECH

# General Status

## SPECIALIZED IN AUTOMOTIVE SEAT

The best technology and quality in Korea.



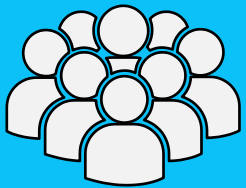
Foundation date

July 1, 1999



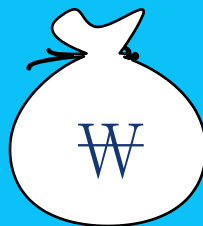
Employee

667 people



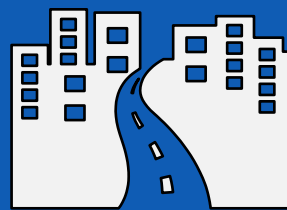
Turnover (in 2023)

\$415 million



Headquarter

Gwangju, Korea



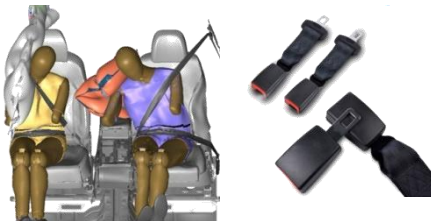
# SEAT INTRODUCTION

## Step 5. Seat Assy

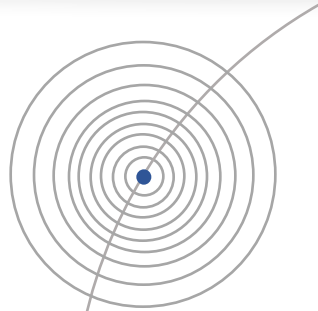


Based on the ergonomic design, we try to make optimal seats because of in contact with passengers for the longest time.

## Step 4. Safety Components



Seat design cares about the safety of passengers protects the passengers under any situations.



## Step 1. Frame



The application of the 3<sup>rd</sup> generation, it has advantage of light weight

## Step 2. Foam Pad



The excellent technology of the seat foam pad provides optimal comfort to passengers.

## Step 3. Covering



Creating a comfortable space in the vehicle by considering not only the touch of the passenger but also the indoor air quality.

# SEAT PLANT\_Gwangju

## Location



## Production status

Division	Model	Production		Land area (m <sup>2</sup> )
		Facillites Capability	Expectation in 2023	
P. 1	SPORTAGE, BONGO III SOUL BOOSTER	350k	297k	7,549
P. 2	SELTOS, SOUL BOOSTER	210k	195k	6,613
P. 3	PAD, H/REST, A/REST	650k	538k	8,716
P. 4	CASPER	100k	50k	2,250

TOTAL PRODUCTION OF SEAT ASSY IN 2023 : 538,000  
 TOTAL PRCDUTIONOF PAD, H&A/REST IN 2023 : 538,000

# SEAT PLANT\_Gwangju

PLANT 1



PLANT 2



PLANT 4



Sportage, Soul Booster,  
Bongo III

\* Production : 293,000 ea  
\* Max CAPA : 350,000 ea



Seltos, Soul Booster

\* Production : 195,000 ea  
\* Max CAPA : 210,000 ea



Casper

\* Production : 50,000 ea  
\* Max CAPA : 100,000 ea



# SEAT PLANT\_Hwaseong

Location



Production status

Division	Model	Production		Land area (m <sup>2</sup> )
		Facillites Capability	Expectation In 2023	
P 1	G4 REXTON, REXTON SPORT	71K	38K	8,512
P 2	K9, STINGER	47K	41K	7,772

TOTAL PRODUCTION OF SEAT ASSY IN 2023 : 79,000

# SEAT PLANT\_Hwaseong

PLANT 1



PLANT 2



G4 REXTON, REXTON SPORT

- \* Production : 38,000 ea
- \* Max CAPA : 71,000 ea



THE K9, EV9

- \* Production : 41,000 ea
- \* Max CAPA : 47,000



# PAD PLANT\_Gwangju

PAD

(MAX CAPA 650,000)



H/REST, A/REST

(MAX CAPA 640,000)



## > 1/2 LINE

- \* Models : SPORTAGE, SELTOS ...
- \* Foaming : Oven type (80°C~120°C)
- \* Foaming Machine :



## > 3 LINE

- \* Models : SPORTAGE, SELTOS ...
- \* Foaming : Hot water type (58°C~600°C)
- \* Foaming Machine :



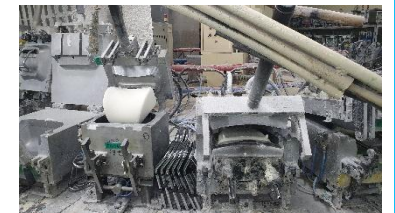
## > 1 LINE

- \* Models : SPORTAGE, SELTOS ...
- \* Foaming : Separable type
- \* Foaming Machine :



## > 2/3 LINE

- \* Models : SPORTAGE, SELTOS ...
- \* Foaming : All-in-one
- \* Foaming Machine :





# Reliability Test

## TEST ROOM

MS  
TEST



ES  
TEST



## Test equipment : 49

ES test : 15 / MS test : 34ea

ES TEST	MS TEST
<ul style="list-style-type: none"><li>• Up and Down durability</li><li>• Vibration durability</li><li>• Static load</li><li>• Seat belt anchor</li><li>• Repeat load durability</li><li>• H/R static intensity</li><li>• Frame intensity</li><li>• Repeated load strength</li><li>• SAB test</li><li>• Multi-joint measurement</li></ul>	<ul style="list-style-type: none"><li>• Infrared ray</li><li>• Combustibility</li><li>• TVOC</li><li>• Formaldehyde</li><li>• Contamination</li></ul>

Electric car platform + Autonomous driving = "Optimization of spatial design"

1 / Comfortable Seating  
MNL Relaxation



2 / Expanding the space  
Long Slide



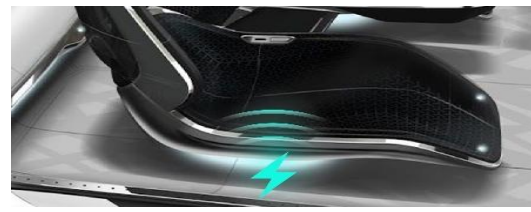
3 / Improvement arranging seat  
Swible



4 / Individual seat control function  
Power A/Rest



5 / Wireless function to avoid disconnection  
Wireless power long rail



6 / Home appliance convergence  
Convergence



 **DAYOU A-TECH**

THANK YOU