

# KYUNGHAN KOREA CO., LTD.



Kyunghan Korea Co., Ltd. endeavors to satisfy our customers with the best facilities and technology



T.055-237-2828 F.055-237-9662  
KYUNGHAN KOREA CO., LTD., 424, Gongdan-ro, Seongsan-gu, Changwon-si,  
Gyeongsangnam-do, Republic of Korea

# CONTENTS

KYUNGHAN KOREA CO., LTD.

01



## Company Profile

History &  
Location  
/  
Sales  
/  
Organization  
Chart

02



## Main Products

03



## Manufacturing Process

04



## Grinding

Turning  
/  
Anodizing  
/  
Polishing  
/  
Washing

05



## Measuring Equipment

06



## Quality Management

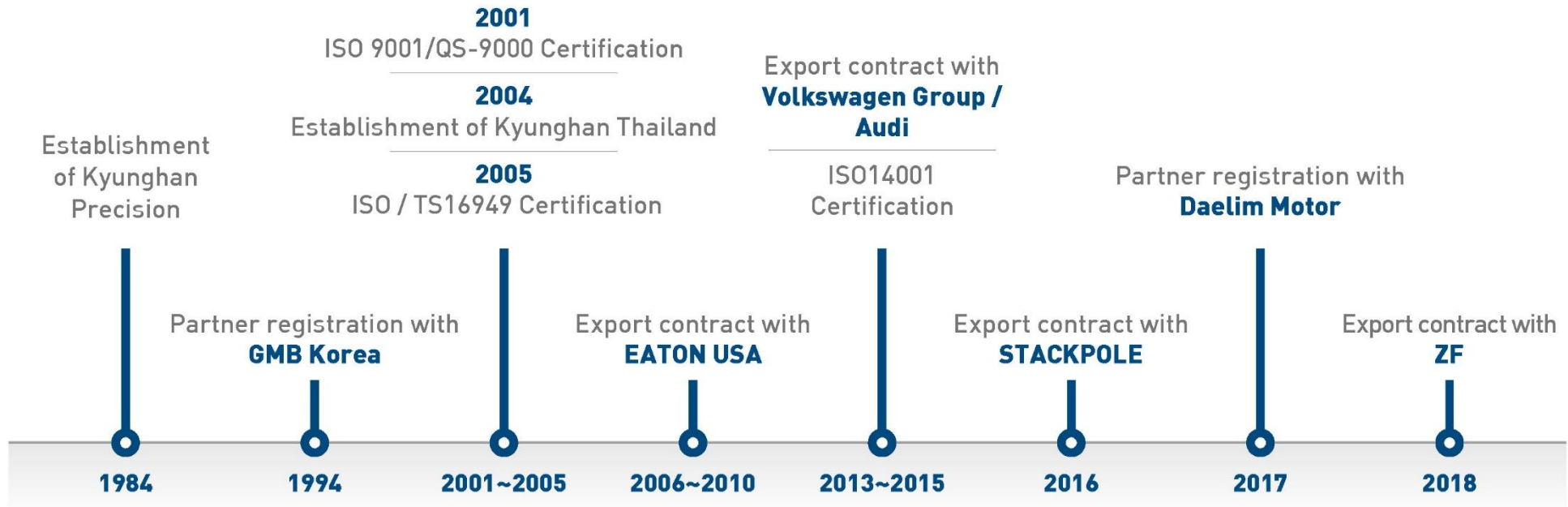
Certificates

07



## Vision

# 01 Company Profile \_ History & Location



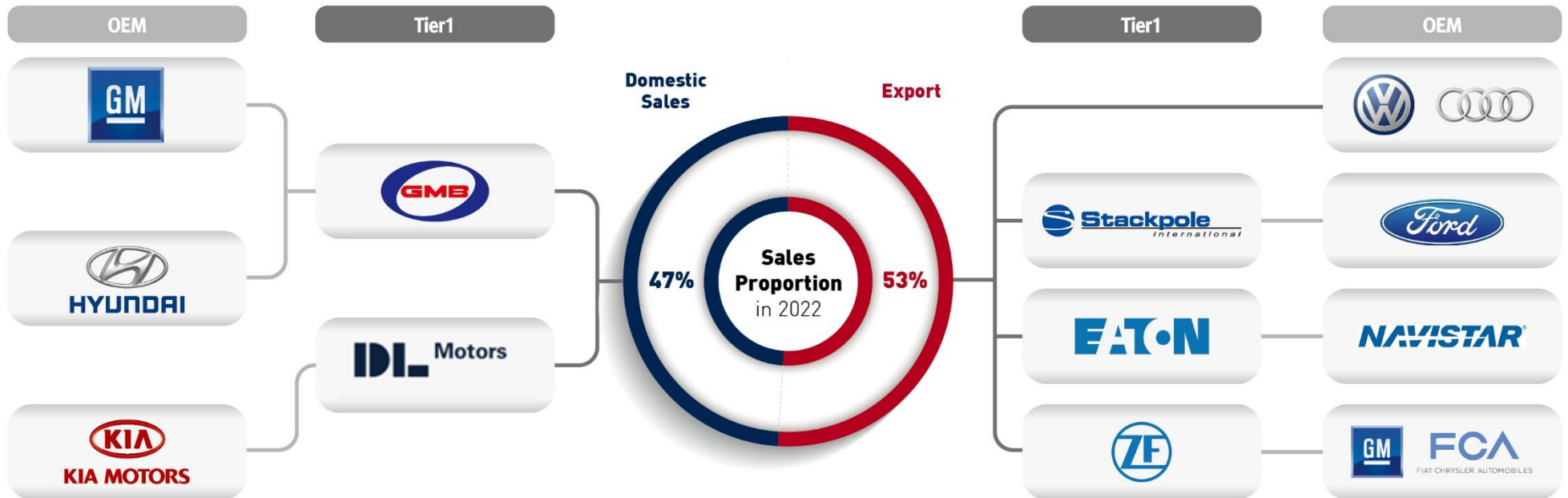
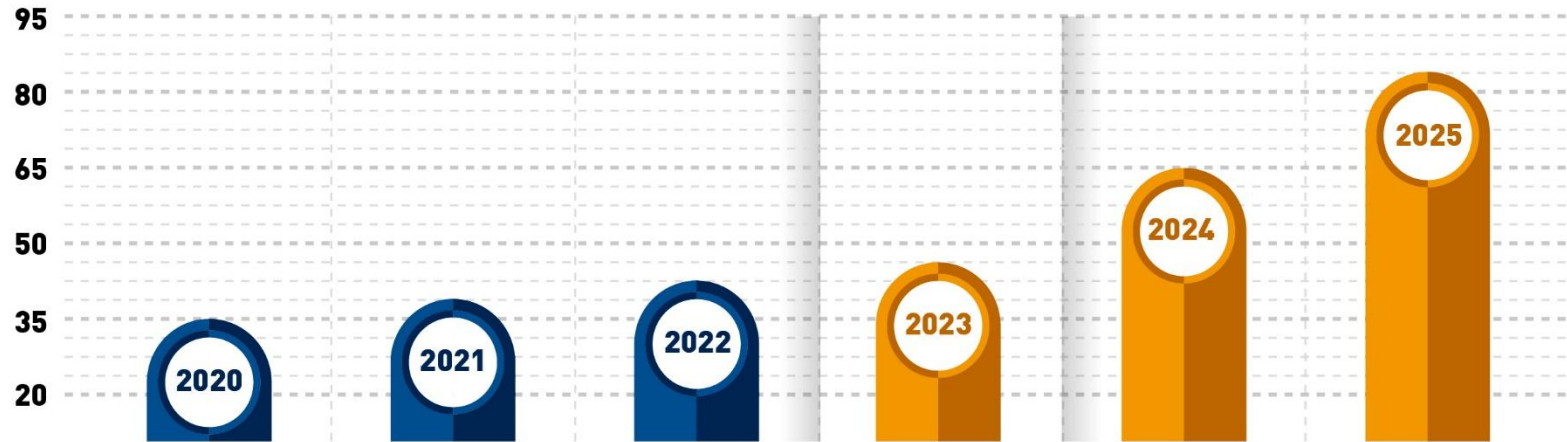
Headquarters	
Location	Changwon
Site	13,000㎡
Building	28,000㎡
Number of Employees	130



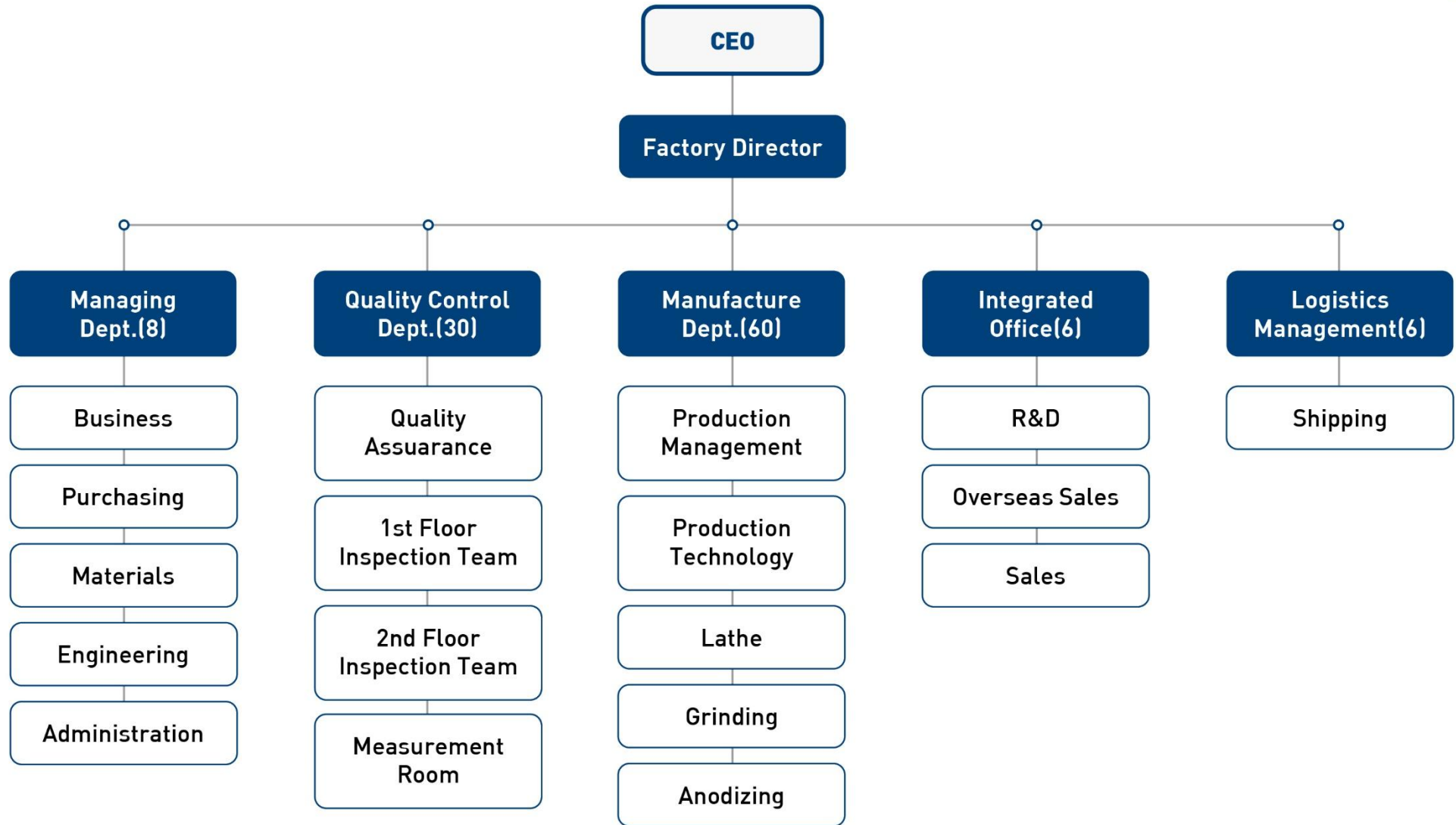
Thailand Plant	
Location	Rayong
Site	13,000㎡
Building	28,000㎡
Number of Employees	130

# 01 Company Profile \_ Sales

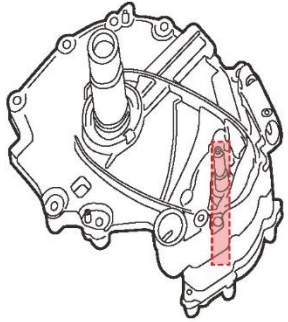
Million(\$)



# 01 Company Profile \_ Organization Chart



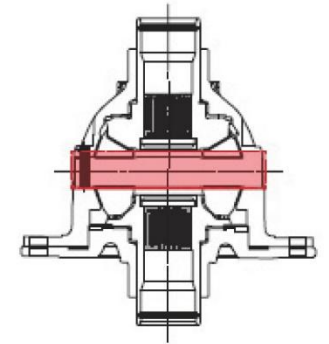
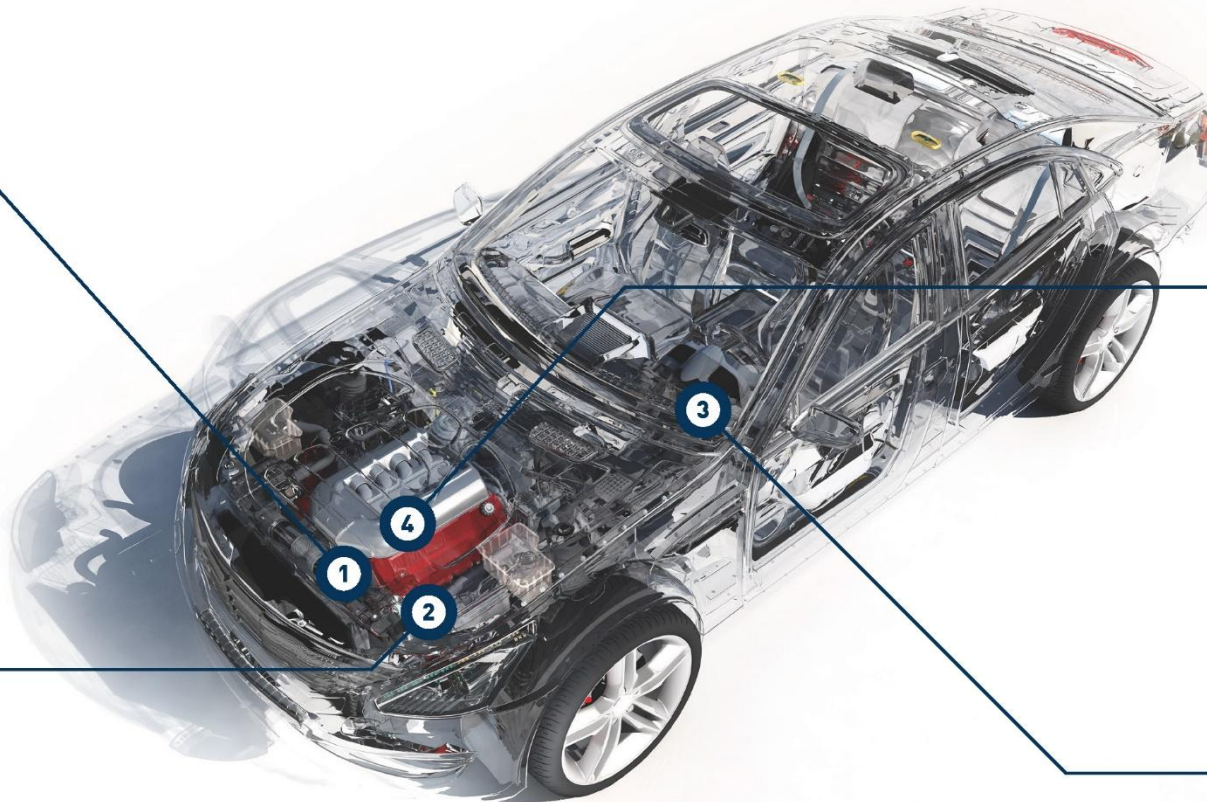
## 02 Main Products\_ Core automotive parts



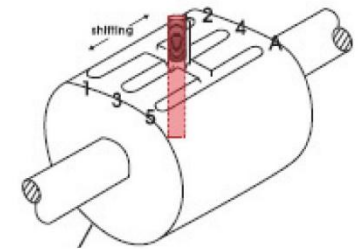
**Oil pump Shaft**



**Valve-Spool**



**Diff-Shaft**



**Manual Control Shaft**

## 02 Main Products \_ Core parts for transmission



# 03 Production Process





## 04 Production Equipment \_ Turning



**320 CNC automatic lathes**



CNC Hanwha 17, 20, 25, 32, 35, 38 Type [169 Units]



CNC Nexton 20, 26, 32, 38, 45, 56 Type [97 Units]



CNC Nomura 16, 20, 32 Type [39 Units]



CNC Cincom 20 Type [10 Units]



Hyundai Wia 20 Type [5 Units]

# 04 Production Equipment \_ Anodizing & Rolling & Grinding



Rolling machine: 3 units

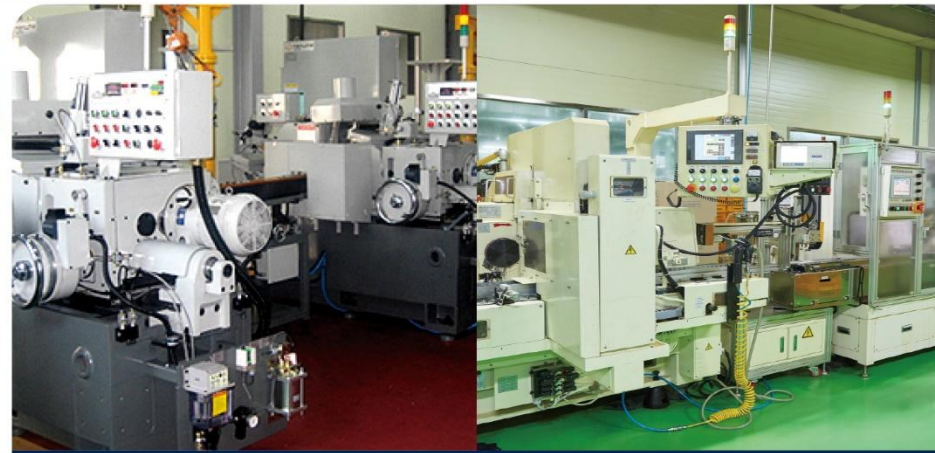


Automatic anodizing line

Automatic anodizing line is automatically operated according to the program of controller (e.g. voltage, amount of current and working time).



MCT: 12 units



Grinding line-Grinding machine: 16 units

Poka-Yoke tool introduced to the grinder automatically measures the outside diameter and the whole lengths and then transmits data to prevent outflow of defective.

# 04 Production Equipment \_ Washing



**Operation of meticulous cleaning system to provide the best quality to customers**

**Cleanroom management standard**

- Cleanness test lab 10,000 class
- Cleanness inspection lab 100,000 Class

**Particle Size**

- Metal: Under 300µm
- Nonmetallic material: 600µm

**Contamination Weight**

- Less than 0.1mg / pcs

# 05 Measuring Equipment



**Non-contact Scan Meter**



**Shape Measuring Instrument**



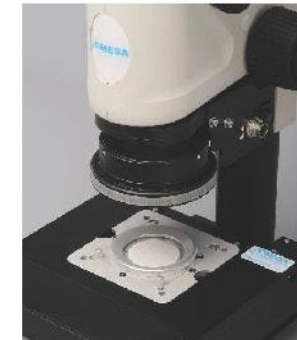
**3D Measuring Machine**



**Micro Vickers Hardness Tester**



**Circularity Measuring Equipment**



**Particle Measuring Equipment**

## Cleanliness

Operation of cleanness control system to satisfy customers with the best quality

## Poka-Yoke Tool

Use of production equipment with Poka-Yoke tool

- Grinding machine: Fool proof sensor (Outer diameter and whole length)
- CNC automatic lathe (Automatic unloading system\_ Prevention of drop)

## SPC System

Operation of SPC systems for critical measurements for all processes using wireless equipment

## MES Management

Lot tracking and management by using barcode system

Real-time monitoring

## Operation of TFT Team

Continuous quality improvement process



High  
quality  
&

*high  
price  
competitive*

High  
reliability

*customer  
satisfaction*

in  
2025

Goal of  
achieving  
annual sales  
of KRW 100  
billion

the  
largest  
scale in  
Korea

300 CNC  
automatic  
lathes,  
which is

More  
than 30  
years of

*CNC  
machining  
know-how*